



RSPCA 
Tasmania

ANNUAL REPORT
2024 / 2025



ACKNOWLEDGEMENT TO THE TASMANIAN ABORIGINAL COMMUNITY

RSPCA Tasmania acknowledges the palawa/pakana peoples as the Traditional Custodians of lutruwita/Tasmania and the islands of Bass Strait. We pay our deep respects to Elders past and present, and we extend that respect to all Aboriginal and Torres Strait Islander peoples who live and work across these lands, seas and skies.

We recognise that sovereignty was never ceded. We honour the enduring cultural, spiritual and ecological connection of Tasmanian Aboriginal peoples to Country—connection that has cared for animals, waterways, forests and coastlines for countless generations. We also acknowledge the knowledge systems that place kinship, Country and all living beings at the centre of community wellbeing.

We thank the Tasmanian Aboriginal community for their guidance and stewardship.

CEO'S MESSAGE

ANDREA DAWKINS

CHIEF EXECUTIVE
OFFICER
RSPCA TASMANIA



It has been another extraordinary year for RSPCA Tasmania — one defined by compassion, courage, and community.

In July 2024, we undertook one of the largest animal welfare operations in our organisation's nearly 150-year history. Following months of careful negotiation, we signed an agreement with the owners of Tasmanian Labradoodles to rehome the 239 dogs in their care, with the condition that the business would close permanently and not reopen in any form.

Thanks to the generosity of our national RSPCA

family and supporters, we raised an incredible \$343,000 to make this rehoming possible. We distributed \$1,000 per dog to each of the rescue organisations that joined us in this effort, and we are deeply grateful to our remarkable partners — Brightside Farm Sanctuary, Dogs' Homes of Tasmania, and North East Animal Sanctuary — for stepping forward to help us give these animals the lives they deserved.

To date, \$325,758 has been spent on direct costs, including the per-dog contributions. This figure does not include the significant staff time, transport, and indirect costs borne by RSPCA Tasmania.

Many of the dogs presented with a range of health issues — from minor dental problems through

to serious gastrointestinal conditions, and of course, the hip and knee complaints common in their breed. But perhaps the most profound challenge has been emotional. Some of these dogs, though only a small proportion, carry deep anxiety born of years of inadequate socialisation and human connection. For them, and for the families who have lovingly welcomed them, recovery is a slow and tender journey.

When our rescue team first entered the site, the sound of dogs desperate for attention filled the air — a sound none of us will forget. There were simply too many animals to have received the individual care and affection they needed. Today, many of their adoptive families

continue to work patiently every day to help their new companions feel safe and calm. We see you, we thank you, and we are endlessly grateful for your compassion and perseverance.

It has also been heartwarming to see new community groups forming around the state, creating spaces for Labradoodle adopters to connect, share experiences, and support one another. These networks are a powerful example of the community spirit that defines Tasmanians and embodies the values of RSPCA.

One project we are the proudest of is our partnership with Anglicare to deliver “Pet Passports” to participants in their home care program with companion animals. RSPCA

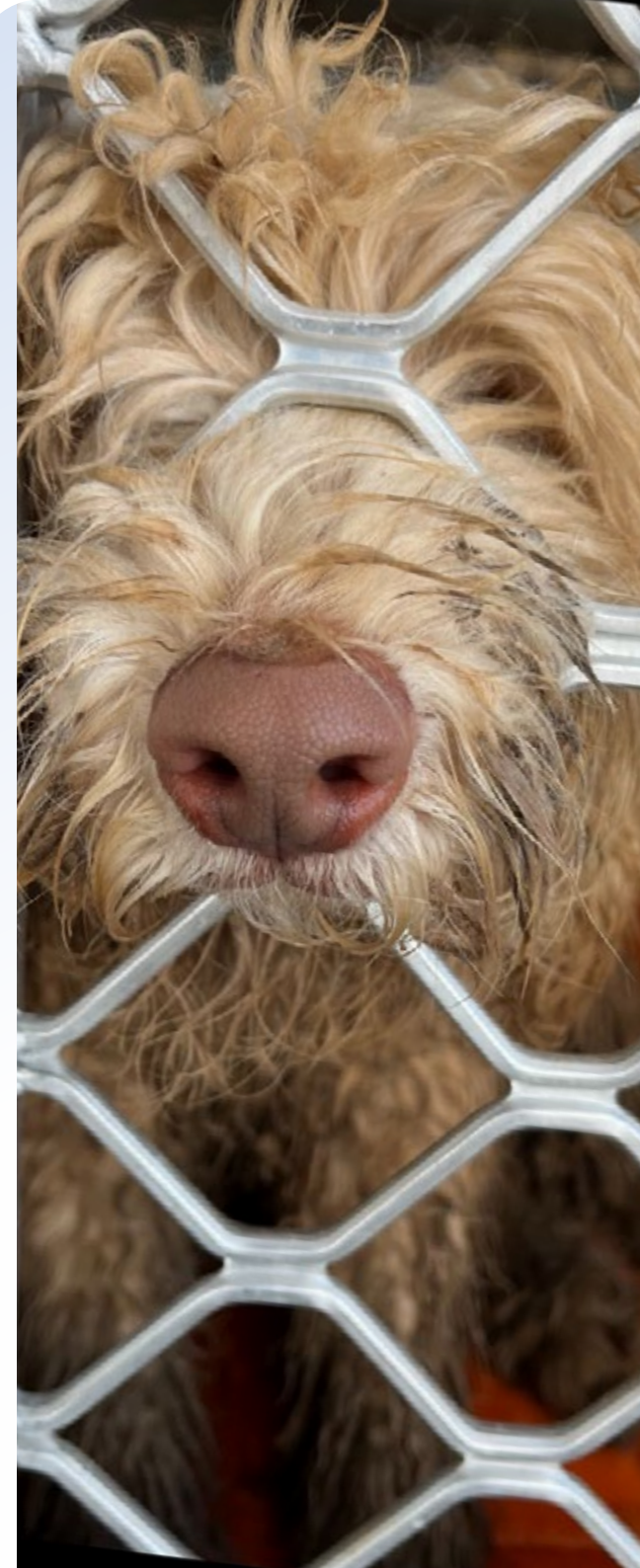
Tasmania congratulates Anglicare for their willingness to amend their pet policy and upskill their team members to be able to safely assess pets in the homes that interact with their care teams. We were able to provide resources, training and assessment tools to underpin Anglicare’s new Pet Passport process. Anglicare has shown that they understand the human/animal bond and its importance to the people who rely on Anglicare for home support. We thoroughly enjoyed meeting some of the team and participants in the program along with their furry family members. We hope this inspires other community service providers now follow Anglicare’s lead.

This year we also brought the Animal Cruelty Helpline call centre home to Tasmania — a major step forward for local accountability and efficiency. This change means that from the moment a cruelty report is received, through investigation, to (where required) prosecution in the Magistrates’ Court, every stage is now managed here in Tasmania by our own team.

Investigations can take many months, and during that time our Animal Care Team provides care, rehabilitation, and comfort to the animals who come to us through seizure or surrender. Their dedication is unwavering, and their work ensures every animal has a chance to heal.

To better support that work and meet the growing community demand, we have commenced the redevelopment of our Animal Care Centre at Spreyton. Construction of a new 20-bed cattery is already underway, and the next stage will see the replacement of our ageing kennels, ensuring the facility — now more than 35 years old — can continue to serve the needs of both animals and staff into the future.

This year has shown us, once again, what we can achieve when compassion meets collaboration. Together, we are building a future where every animal in Tasmania is safe, respected, and loved.



CHAIR'S REPORT

ALEX GARROTT
CHAIR
RSPCA TASMANIA



It is with great pleasure that on behalf of the Board I present this report to members and supporters of RSPCA Tasmania.

This year has been one of RSPCA Tasmania further refining our operations whilst remaining true to our purpose of delivering services to Tasmania's animals in most need.

FIRSTLY TO THE LEADERSHIP OF RSPCA TASMANIA.

The Board would like to sincerely thank our CEO, Andrea Dawkins, for her unwavering dedication and compassionate leadership during a time of thoughtful yet challenging changes, all made to secure a bright future for RSPCA Tasmania. We are also deeply grateful to our senior managers, who show up every day for our staff with kindness and openness, fostering a supportive and caring environment for everyone.

FINANCIAL RESULTS

A summary of the Financial position for the year is available in our audited financial reports. So I will only touch on our financial performance here.

This year marks a significant turnaround for RSPCA Tasmania. After a challenging 2024, where we faced a substantial deficit and made difficult but necessary decisions to secure our future, we are now seeing the positive results of those efforts.

For the 2025 financial year, we budgeted for a \$107,000 deficit but instead achieved a surplus of \$465,000. Our cash reserves have grown by 8% to \$1.19 million, and liabilities have been reduced by 54%, placing us on a much stronger and more sustainable financial footing. While total assets have decreased slightly, the overall position is markedly improved.

Operationally, our Inspectorate service is now supported by a new grant deed with the Tasmanian Government, providing improved funding and support for our inspectors, though demand still exceeds resources.

Our hard decisions of 2024 have led to positive results in 2025. Our responsibility now is to consolidate these gains, support our core services, and maintain careful governance to ensure RSPCA Tasmania ensure RSPCA Tasmania remains a financially resilient but effective organisation to deliver our mission.

DELIVERING OUR MISSION

The highlights of the impact we have made on the lives of animals in Tasmania will be outlined by our CEO in their report for this financial year.

However, I would like to share some wonderful highlights for the financial year:

- We undertook one of the largest surrenders in RSPCAs 146 year history of 236 Labradoodles
- Over 1900 calls were made to our animal cruelty hotline
- Over 1000 animals came into our care
- We helped 67 people with emergency accommodation for their pets through our Safe Beds program.

STRATEGIC PRIORITIES

For the Board of RSPCA Tasmania, this year our focus has been on creating strategic priorities ensuring our services are contemporary, sustainable and aligned to our mission.

This year, across Australia, there has been a renewed focus on achieving RSPCA's alignment and efficiencies. Each RSPCA member society now shares an Australia wide set of vision, mission, purpose and values. This helps build a strong foundation for cooperation and mutual support among the RSPCA member societies in achieving their collective goals.

This commitment to collaboration ensures that RSPCA Tasmania continues to make a meaningful difference in the lives of animals most in need in Tasmania while contributing to the unified mission of the Federation at a national level.

For RSPCA Tasmania, our Strategic Goals for 2026-2030 are:

- **Caring for Tasmania's animals** - Building a future for animals free from fear, cruelty and neglect.
- **Protecting animals in need** - Investigating, rescuing and

protecting to prevent animal cruelty.

- **Connecting with Community** - Nurturing a strong community that understands, upholds and embraces animal welfare.
- **Advocating for a better world for all animals in Tasmania** - Establishing RSPCA as the leading voice for animal welfare in Tasmania.
- **Living our Values** - Support our valued team to live RSPCA values.
- **Being an effective organisation** - Being a sustainable, efficient, effective and well-resourced organisation.

We will continue our focus and align our resources to deliver these important goals through operating and delivering our mission through protection, prevention and connection.

ACKNOWLEDGEMENTS

I thank our incredibly dedicated staff, both present and past, for their continued diligence and dedication to the organisation. Through uncertain and changing times, they have remained focussed and professional in delivering the best outcomes for Tasmania's animals needing our care and attention. I also

acknowledge that recent changes have impacted the working arrangements of many of our team members and I thank each and every one of them for their commitment to create a sustainable future.

I also recognise and thank all our wonderful volunteers that provide so many valuable hours of service to RSPCA Tasmania. We could not achieve all we do without their generous support and commitment.

Both our staff and volunteers are instrumental in delivering the best outcomes for the animals of Tasmania. As reported by our CEO in their end of year report, we continue to achieve outstanding results for advocacy, the inspectorate service and animals in our care.

During this financial year we have had one resignation from the Board, Cate Martin. We thank Cate for her four years of service of volunteer contribution to the Board. Cate has used her deep expertise in governance to provide tools and guidance to further uplift the Board's operations.

Continuing our commitment to have a well balanced skills based board, we welcomed appointed Board member Wes Young, who

brings skills to perform the role of Company Secretary to our Board.

I would personally like to thank current serving Board members Lexi Airey, Jane Hanna, Monica Holland, Felicia Mariani, Jake Smith, Chris Stokes and Wes Young for freely giving up so much of their time and for their wise council over the last 12 months.

I would like to acknowledge the Department of Natural Resources and Environment Tasmania and commend them for their continued support throughout this year, especially Minister Howlett.

I would also like to thank all our members, benefactors and other supporters that care so much for this organisation. RSPCA Tasmania is sincerely grateful for your ongoing commitment to our work.

In conclusion, I want to thank my fellow Board members for their wonderful assistance and support during this year and look forward (as it says in our new Vision Statement) a world where animals and people live together with dignity, respect, and compassion.

OUR PURPOSE

We exist for animals to live better lives

OUR VISION

A world where animals and people live together with dignity, respect, and compassion

OUR MISSION

We improve the lives of animals through care and evidence-based welfare advancements that change attitudes, behaviours, practices and laws.

WE ACHIEVE OUR MISSION BY OPERATING IN THREE DISTINCT WAYS:

PROTECTION

We ensure the safety and welfare of animals by protecting them from cruelty, mistreatment and harm

PREVENTION

We give animals a good life by proactively preventing abuse, suffering and neglect while creating conditions that promote positive animal welfare

CONNECTION

We create a better world for animals by strengthening the human-animal connection through programs and activities that benefit everyone.

THE INSPECTORATE

The Inspectorate division has seen changes and positive improvements over the 24/25 financial year. There has been an organisational shift into a pro-enforcement and modern business unit within the RSPCA, not only benefitting animals across Tasmania, but also benefitting the Inspectorate and wider team.

Inspectors responded to more than 1900 cruelty reports, noting that many required numerous attendances at properties to ensure the welfare of animals and to hold people who commit offences to account. Inspectors across Tasmania were guided to adopt more of a pro-enforcement model with a shift towards a firm, but fair approach when dealing with animal welfare offences and repeat offenders.

Inspectors seized 208 animals which resulted in 56 charges being laid and 18 Infringement notices being issued. Offences ranged from management of animals reasonably likely to cause pain and suffering, Animal Cruelty, Aggravated Animal Cruelty and Abusing or Threatening an RSPCA Inspector.

There was a major push this year to increase random, un-announced inspections occurring at facilities as defined by Legislation. Inspectors participated in planned auditing operations across the state which resulted in 31 facilities being inspected. Facility operators were provided education surrounding legislative requirements and where offences were detected, Inspectors took appropriate enforcement action.

The results for the 24-25 FY have increased significantly from the previous year and the Inspectorate will continue to ensure that people who commit offences are held to account and that our proactive enforcement activities such as facility audits will continue into the future.



GENERAL OPERATIONS

Inspectors have seen implementation of a standardised operating model, to ensure consistency and a professional way of working as the organisation looked to modernise. The inspectorate has seen several prosecution cases finalised in Court, one of which resulting in a suspended term of imprisonment, as well as having numerous cases brought before the Court for alleged serious offending in aggravating circumstances.

Inspectors have also recommenced issuing infringement notices in appropriate circumstances. These have been a useful tool to deal with lower-level offending that whilst may not warrant a court appearance, still need to be denounced.

RECRUITMENT & RESTRUCTURE:

The Inspectorate has seen a doubling of its work force, progressively over the last year which has meant a substantial increase to operational capacity. An Inspectorate restructure was also completed to increase the opportunity for career progression, to ensure there is adequate supervision of operations across the state, and to ensure the more junior Inspectors are appropriately supported. The team now consists of 7 Inspectors; a Chief Inspector and the team is supported by Operations Support Officers who provide important administrative and response assistance.

FACILITY AUDITING:

As a result of the Inspectorates increased staffing, we have had a much better opportunity to conduct random facility inspections across the state. During the course of the year, Inspectors were tasked statewide to conduct random facility inspections, flooding each of our regions and targeting all types of facilities as defined under the Animal Welfare Act, including breeders, pet shops, boarding facilities and more. This continues to remain a large focus for the Inspectorate as a positive proactive approach to ensuring animal welfare.

SAFETY:

Numerous safety improvements have been made to Inspectors to ensure that they are protected whilst performing their duties. From having nothing other than a GPS tracker on their vehicles, Inspectors now have numerous procedures and equipment to ensure their safety, including radios, check in procedures, duress alarms, and defensive equipment.

SUMMARY:

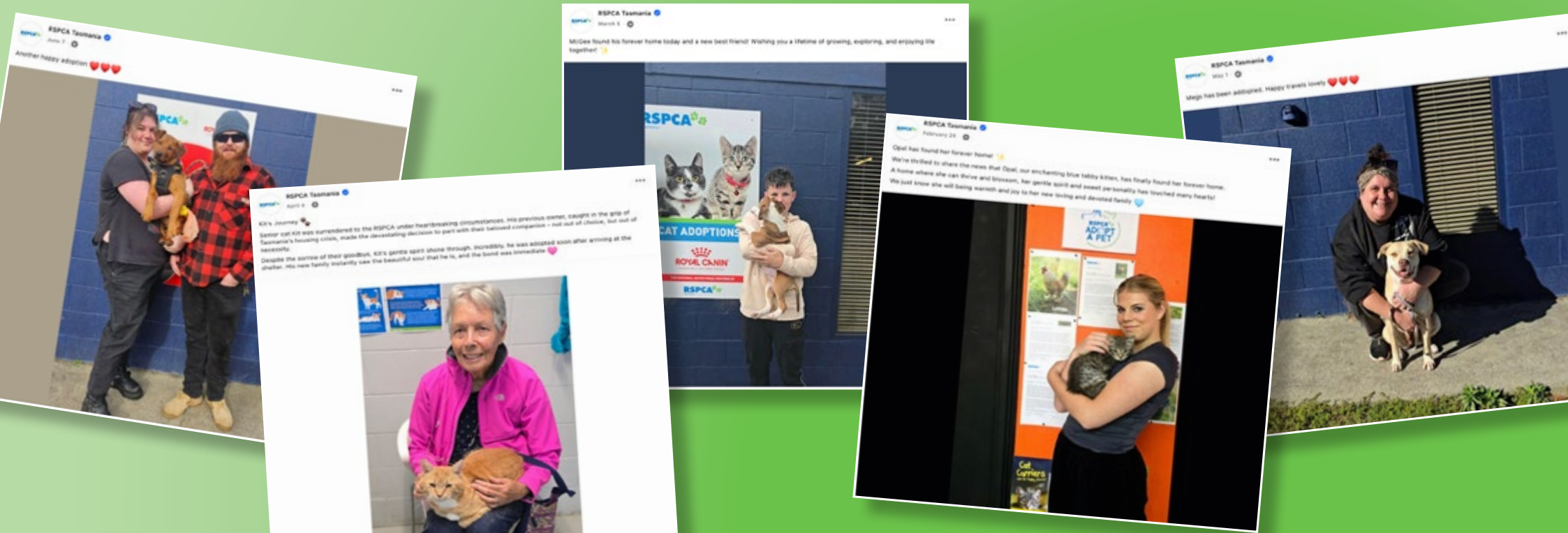
Overall, the Inspectorate's operational functions have been modernised. There is always more work to do, but it is very pleased the path the Inspectorate is on and the direction it is heading. Whilst we need to be fair, we also need to be firm and ensure we hold people to account that mistreat animals and these results show that the Inspectorate is doing that and living up to community expectations to the best of their ability.

ADOPTIONS

837 cats, dogs, small animals, and farm animals and were adopted through our Animal Care Centre. Our small but mighty team ensured that those animals received all the love and care they needed to set them up for success in their new homes. From the large labradoodle surrender to the ex-racing greyhounds, working dogs and staffies- all the dogs enjoyed the daily walks and play that they need for enrichment.

The cats in our care that come from homes where people are unable to care for them were rehomed through our centre. In the instances where we were called to trap unsociable cats that were being fed by community members but had no health checks, had not been handled as kittens and grown up knowing that being near people meant food but did not take any comfort from being handled, rarely made it past the initial vet check presenting a huge

challenge to all organisations tasked with removing cats and kittens from the environment. The last thing any of us want to do is to euthanise animals but when feral cats present to us with huge eyes, full of fear, ready to flair at anyone who comes close, we know we have no choice.



BEQUESTS

TOTAL BEQUEST AMOUNT 24/25 FINANCIAL YEAR

\$1,002,769.08

FROM 32 GENEROUS BEQUESTS INCLUDING:

Robert Douglas Abey
Barbara Jeanette Austin
Dorothy Mary Blackburn
Julia Shirley Blacklow
Rosmary Connors
Margaret Clara Dall'Ozzo
Freda Isabel Downing
Joan Edna Pauline Dunkin
Olga Joy Fletcher-Jones
&
11 anonymous Bequests



ANIMALS ARE ALL SORTS OF AMAZING

They change our world without a word.
Read our minds.
And mend our hearts.
They protect us.
Entertain us.
And get us out of bed.
They're an antidote for loneliness.
Make a house a home,
leaving a paw print on our lives that last forever.

Animals give you
a better life.
You can leave them
a better world through
a gift in your Will to
RSPCA Tasmania.

FUNDRAISING EVENTS & COMMUNITY ENGAGEMENT

Throughout the 24/25 financial year, we continued to connect with our communities through a range of fun, heartfelt, and purposeful events. From weekly Puppy Parking at Salamanca Market to the much-loved Quizmas in July, Cupcake Days and our final Million Paws Walk, every event brought people together in support of animals across our state.

PUPPY PARKING

In partnership with the City of Hobart, our popular Puppy Parking service at Salamanca Market provides a safe and happy space for dogs while their owners explore the market.

Every Saturday, our team care for visiting dogs – offering walks, toys, treats, and plenty of affection.

During 24/25 financial year, we looked after 238 pups, strengthening community connections and raising vital funds to support animals in need.

QUIZMAS IN JULY

Our Quizmas in July events, held in Devonport and Launceston, were once again a highlight on the fundraising calendar. More than 450 enthusiastic participants came together for nights filled with laughter, friendly competition, raffles, and auctions – raising an incredible \$23,000 to help Tasmanian animals.

We extend our sincere thanks to our key donors and supporters including Cromarty, Aquilla Eco Retreat, Autobarn Statewide, Gordon River Cruises, Crema Pro, and Launceston Distillery – and to the volunteers whose time and energy made these events shine.

“We’ve attended Quizmas in July for four years and always enjoy the team spirit, organisation, and the amazing work your hosts do throughout the night. Thank you and well done!”

– Liz Ferrara

CUPCAKE DAY

August was all about baking and giving back! Across the state, 23 Cupcake Day hosts baked, decorated, and shared sweet treats to raise a total of \$9,000.

From office morning teas to friendly neighbourhood gatherings, participants brought creativity and heart to the cause – with some even crafting cupcakes that resembled their pets!

We are so grateful to everyone who “baked to make a difference.”



MILLION PAWS WALK: ONE LAST LAP

On Sunday, 29 May 2025, we celebrated the final Million Paws Walk — marking the end of 31 wonderful years of this iconic event across Australia.

Tasmanian walkers and their dogs gathered in Hobart, Launceston, and Ulverstone for a sunshine-filled day of joy, connection, and community. Together, 649 participants raised \$21,350, with 64% coming from peer-to-peer fundraising efforts.

Although this chapter has closed, the spirit of Million Paws Walk will live on as we look forward to creating new ways for animal lovers to connect and celebrate in the future.

RSPCA Million Paws Walk one last lap

"It's always such fun to spend the day with your team and community. You always make us feel so welcomed and valued."

— Royal Canin team member

"This has always been a great event, and this year was no different. Thank you, RSPCA Tasmania!"

— Participant



SEE YOU AT THE LAST EVER
10am-2pm
SUNDAY
25 MAY
Launceston
Ulverstone
& Hobart

RSPCA
Million
Paws Walk
one last lap

REGISTER TODAY AT
millionpawswalk.com.au

ROYAL CANIN BRAVECTO Australia Post GENERAL COAST COUNCIL City of LAUNCESTON RSPCA Tasmania

FUNDRAISING APPEALS AND REGULAR GIVING



Throughout 24/25 financial year, our appeals inspired extraordinary generosity from our supporters – helping to rescue, protect, and care for thousands of animals across Tasmania.

Labradoodle Rescue Appeal

At the start of the financial year, we faced an unprecedented challenge: rescuing and rehoming 239 Labradoodles in urgent need of care. The response to our appeal was incredible. More than 3,100 donors from Tasmania, across Australia, and around the world contributed \$343,000, providing the resources needed to rehabilitate and rehome every dog. The compassion shown by our global community was truly heartwarming.

Give To Get Them Home (RSPCA Giving Day)

Our annual matched giving day raised \$31,000, thanks to the generosity of our donors and matched partners – Queechy High School, Royal Canin, Bravecto, and Peter Alexander. These contributions directly supported rescue, shelter, and care for animals in need.

Christmas and Tax Appeals

Together, these campaigns raised an additional \$36,000, helping to fund veterinary care, shelter upgrades, and emergency rescues.



Regular Giving

Our Regular Giving community plays a vital role in sustaining RSPCA Tasmania's work throughout the year. These compassionate supporters provide steady, reliable funding that ensures animals receive care every day – not just in times of crisis. From rescuing animals in danger to providing safe shelter, nutritious food, and veterinary treatment, their ongoing commitment helps us plan for the future with confidence.

To all those who supported RSPCA Tasmania through our appeals and regular giving programs – thank you. Your kindness ensures that we can continue to be there for animals when they need us.



ADVOCACY

GREYHOUND RACING:

“Societal attitudes towards deliberate cruelty to animals have changed incrementally and very significantly over recent times. One can cite clear and changed attitudes towards whaling, battery hens, greyhound racing, animal slaughtering practices and live sheep exports.”

**Justice Brett,
Bond v Lamprey (2022)**

Australia remains one of only seven countries with a commercial greyhound racing industry — and by far the largest. Globally, the industry is in decline: Macau banned greyhound racing in 2018, and only two U.S. states still permit it. Closer to home, the ACT banned greyhound racing in 2018, with New Zealand having entered a phase-out period. RSPCA Tasmania welcomes the announcement that Tasmania will now follow suit and phase out greyhound racing by 2029.

ANIMAL WELFARE LAWS: REFORM NOW, NOT LATER

RSPCA Tasmania welcomed the opportunity to contribute to the Improving Dog Welfare Outcomes in Tasmania review. However, we are deeply disappointed that the legislative reforms were not tabled before the election was called. This delay risked losing momentum on a generational opportunity to make Tasmania a national leader in animal welfare.

Tasmania’s current legislative framework — the Animal Welfare Act 1993, Dog Control Act 2000, and Animal Welfare (Dogs) Regulations 2016 — is no longer fit for purpose.

RSPCA Tasmania has called for:

- A cap of 10 breeding bitches per facility
- A maximum of four lifetime litters per dog

These reforms would effectively ban puppy farms and establish the strongest breeding laws in the country.

DUCK SHOOTING: END AN OUTDATED PRACTICE

Each year, for 12 weeks, Tasmania’s wetlands become killing fields. Native ducks — including species that mate for life — are shot for sport. Many are wounded and die slowly from injuries, while non-target species are also at risk.

Despite legislated reporting requirements, there is little transparency around:

- How many ducks are killed
- Which species are affected
- Whether bag limits are respected

In 2023, **1,044** shooters killed **35,716** ducks. That’s a small minority of Tasmanians causing disproportionate harm. A 2025 RSPCA survey shows:

Only **4%** of respondents had ever **participated in duck shooting**

50% strongly oppose it

Only **19% support duck shooting** as a recreational pursuit

Duck shooting is a marginal activity, yet it causes widespread and avoidable animal suffering.





WHIPS IN HORSE RACING

The RSPCA is opposed to the use of whips to enhance performance in racing due to the pain and distress they inflict on horses. The RSPCA supports the introduction of hands-and-heels racing, where whips are carried for safety purposes, where proven necessary.



Research examining the effect of whip use on performance in racing has indicated that horses are whipped most during the last 100 metres of the race, in an attempt to make them run faster towards the finish line. Yet how the horse ran prior to this stage was found to be the most critical factor in racing success. What this indicates is that whip use occurs at its highest frequency when horses are fatigued and have less capacity to respond.



RSPCA advocates for introducing whip-free (hands and heels) races into the racing calendar, as they have in other countries. These measures would help ensure that racing performance is not determined by inflicting pain through whipping but rather by sound breeding, quality training, and outstanding horsemanship.

PETS IN RENTALS: REMOVE UNFAIR BARRIERS

Tasmania has one of the highest rates of pet ownership in the world — and pets are cherished family members for many. Yet under current laws, tenants must seek permission to keep any pet, and landlords can refuse without giving a reason, unless the animal is a registered assistance dog.

This forces many people into heartbreaking decisions — choosing between a home and their beloved pet. Every day, RSPCA Tasmania receives calls from people at risk of homelessness due to pet restrictions in rentals.

Legislative reforms to allow pets in rentals almost passed in the last term of parliament but were left incomplete when parliament was prorogued. This legislation needs to be revisited to bring us in line with other jurisdictions.

CAT CONTAINMENT: A HUMANE AND RESPONSIBLE POLICY

A recent RSPCA Tasmania survey found that:

- 72% of respondents believe containment helps protect wildlife
- 66% say it reduces injury risk and overpopulation

While some owners raise concerns about cost or impact on quality of life, most cats can adjust to a contained environment if transitioned gradually and provided with proper stimulation and care.

Cat containment not only protects native wildlife — it also improves feline health and longevity. It enables owners to manage their pet's environment more effectively and responsibly.

These are achievable, popular, and necessary reforms. They will position Tasmania as a national leader in animal welfare and reflect the values of a compassionate and progressive society.

SAFE BEDS

67 people utilised our Safe Beds program in the 24/25 financial year. 44 were escaping domestic/family violence, 5 were homeless and 18 were hospitalised in emergencies.

100 animals were cared for in that time. Some only stayed a few days, whereas others stayed for many months, with one cat in care for over a year. We regularly speak to groups of people who work on domestic/family violence to explain the program to them and how to effectively advocate for their clients' companion animals.

In the case of 8 of the people who were hospitalised in emergencies, we could care for the animals in the home, working with social workers in the state hospitals to alleviate our clients' fears that their animals would be rehomed due to their circumstances.

Safe Beds has become a respected project for us, with the major hospitals and community services organisations

A SAFE BEDS CASE STUDY

In early 2025, we received a call from a concerned secondary

school asking for urgent help for a student living in a vehicle with a family member and their much-loved companion animal. The family was fleeing violence and had been offered temporary accommodation — but, like so many in crisis, they faced a heartbreaking barrier: their pet could not stay with them. For people experiencing homelessness, this gap in the system can mean the difference between safety and further hardship. Within six hours of the call, we brought the animal into our care through the Safe Beds program. Since then, our team has been working closely with

the school's social worker, the student, and the family member, providing regular updates and reassurance that their animal is safe and well. This peace of mind has been critical, allowing them to focus on navigating daily life in extraordinarily difficult circumstances.

The animal will remain in Safe Beds until the family secures pet-friendly accommodation — when they can finally be reunited. This is the heart of Safe Beds: keeping families and their animals together, even through the most challenging of times.



MICROLOAN PROGRAM

Our microloan program has been a lifeline for low-income Tasmanians, enabling 440 people to access loans of up to \$500 for emergency veterinary care or desexing surgeries. We lent a total of \$156,000 to Tasmanians needing short-term financial assistance. As the cost of living continues to outpace wages and Commonwealth benefits, this partnership with the community

represents a leap of faith — one that has proven both practical and empowering, particularly for seniors. Through a network of veterinary practices statewide, we ensure applications are processed quickly so clients can focus on their unwell or injured companions rather than financial stress. Our dedicated team even works outside regular business hours to keep the program responsive — because animals don't schedule emergencies.



NEW CATTERY & KENNELS

A new cattery and kennel area is currently under construction at our Animal Care Centre, replacing some of our ageing infrastructure. These upgrades will provide more comfortable, purpose-built spaces for the cats and dogs in our care, while also giving our dedicated team a safer and more efficient working environment.


While we always aim to rehome animals as quickly as possible, the reality is that many remain with us for extended periods due to lengthy court processes beyond our control. With these improved facilities, we can ensure that animals who must stay longer experience a more pleasant and less stressful environment, making their time with us as positive as possible.




OUR TEAM

We have a small team, with 8 inspectors, 3 people working on the animal cruelty helpline, with hybrid roles, where they also work on Safe Beds and general animal transport. We have 9 people at our Animal care Centre, 2 people in finance, 1 person in

fundraising and graphic design, and 4 people working casually at Puppy Parking at Salamanca and in events. The output of this team is a credit to their enthusiasm, motivation and dedication to improving the lives of vulnerable animals in Tasmania better.



Kerri, Bethany, Juliet, Rose, Clare, Tori, Alex, and John



Jayden, Kerri, Amanda, Monique, Lauren, Andrea and Shane

FINANCIAL STATEMENTS

CLICK HERE
TO ACCESS

OR SCAN



<https://www.rspcatas.org.au/wp-content/uploads/2025/11/RSPCA-Tasmania-Financial-Statements-30062025.pdf>

Contacts

rspcatas.org.au | 03 6709 8100
rspca@rspcatas.org.au | PO Box 66 Mowbray 7248

Animal Cruelty Hotline 1300 139 947

Email: reportit@rspcatas.org.au

